

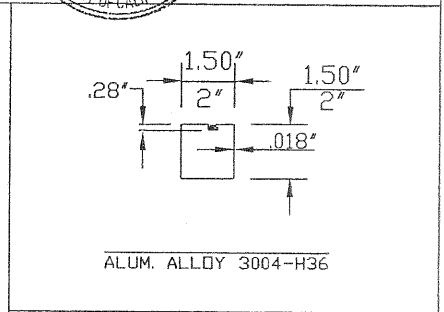
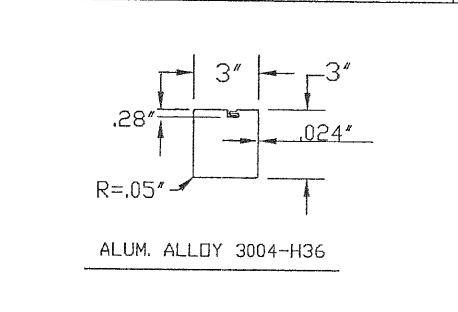
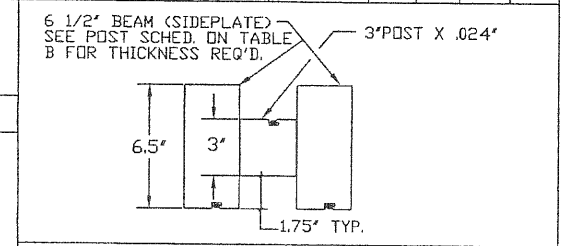
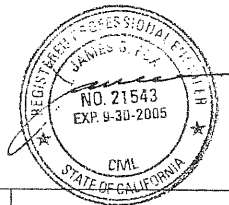
MAXIMUM POST SPACING & FOOTING SIZES FOR OPEN LATTICE PATIO COVERS

10 P.S.F. LIVE LOAD, 70 M.P.H. WIND

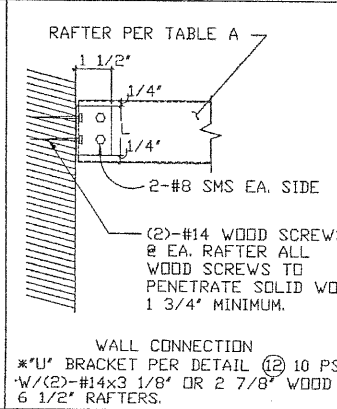
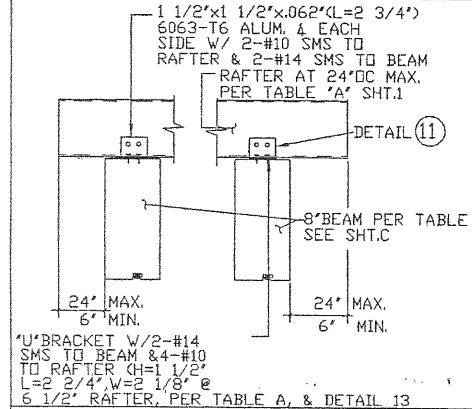
MAX. RAFTER SPAN PER DET. (8)	MAXIMUM POST SPACING		MIN. # OF COL. POST TYPE			
	AT SLAB	AT FTG.	1	2	3	4
6'-0"	14'-10"	14'-10"	15' CUBE	2	-	-
7'-0"	14'-4"	14'-4"	15' CUBE	2	-	-
8'-0"	13'-6"	13'-6"	16' CUBE	2	-	-
9'-0"	13'-3"	13'-3"	16' CUBE	2	-	-
10'-0"	12'-7"	12'-7"	17' CUBE	2	-	-
11'-0"	12'-5"	12'-5"	17' CUBE	2	-	-
12'-0"	11'-9"	11'-9"	17' CUBE	2	-	-

POST SCHEDULE TABLE B

POST TYPE	POST DESCRIPTION *
1	3' SQ. POST W/ 6 1/2' x 2' x .024' SIDE PLATES W/ (4)-#14 S.M.S. TO BEAM



OPEN LATTICE PATIO COVER



TYPICAL POST (1)

MC. BLENHOME ACCESSORY BUILDING OR STRUCTURE HEALTH AND SAFETY CODE, DIVISION 13, PART 2 APPROVED SUBJECT TO CORRECTIONS NOTED

Approval does not constitute or represent any admission or deviation from requirements of applicable State laws and regulations.

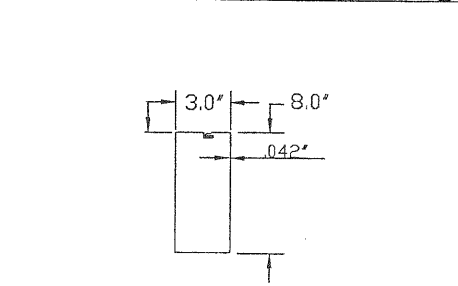
State of California
Department of Housing and Community Development
DIVISION OF CODES AND STANDARDS

By: *Alfredwell* Date: 5/22/02
(Signature) 88-72

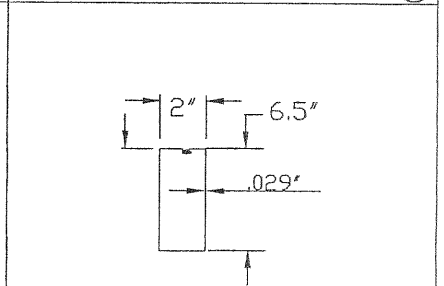
SFA NO. _____

This Plan Approval Expires 6/30/04

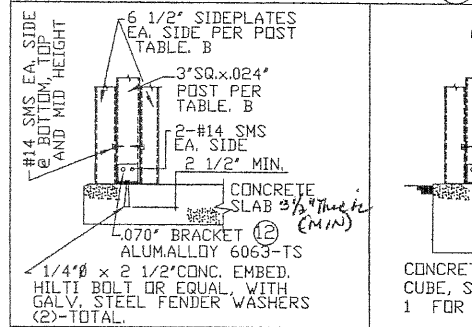
3' SQ. POST (2)



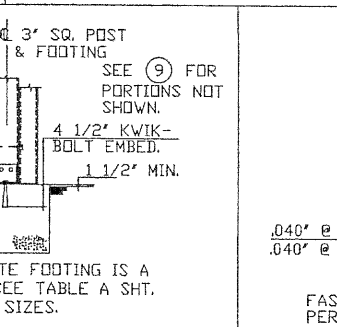
1 1/2' SQ. OR 2' LATTICE TUBE (3)



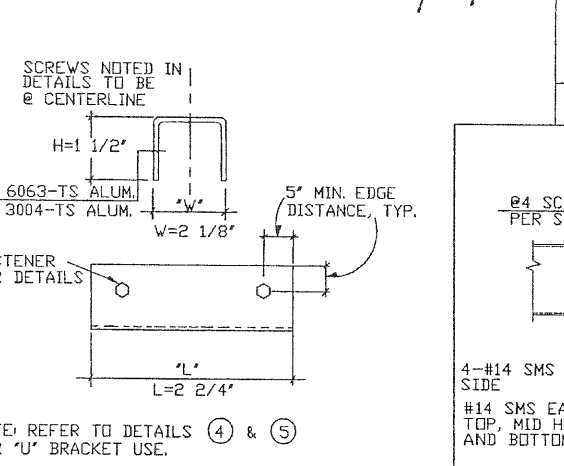
RAFTER TO BEAM CONNECTIONS (4)



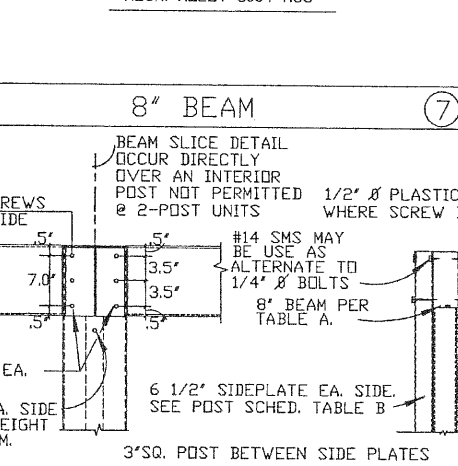
WALL CONNECTION (5)



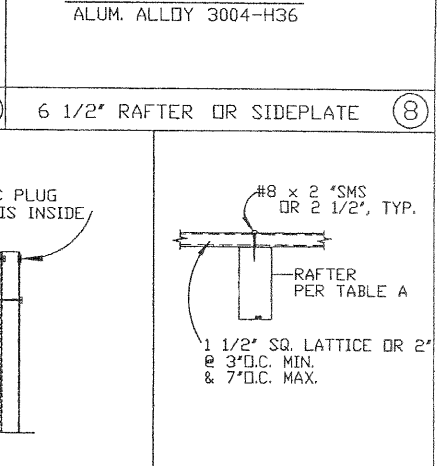
SCREWS NOTED IN DETAILS TO BE @ CENTERLINE



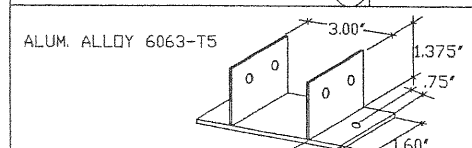
8\"/>



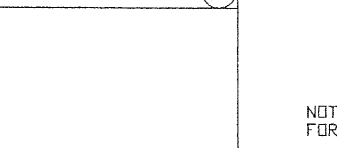
6 1/2\"/>



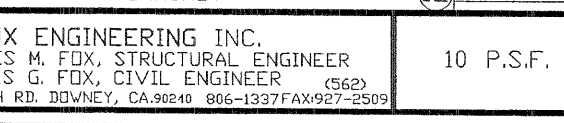
POST AT SLAB (9)



POST AT FOOTING (10)



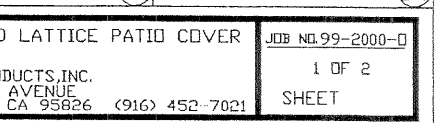
TYPICAL 'U' BRACKET (11)



BEAM TO POST CONNECTION (12)



LATTICE TO RAFT. (14)



STATE OF CALIFORNIA S.P.A. NO. 88-72

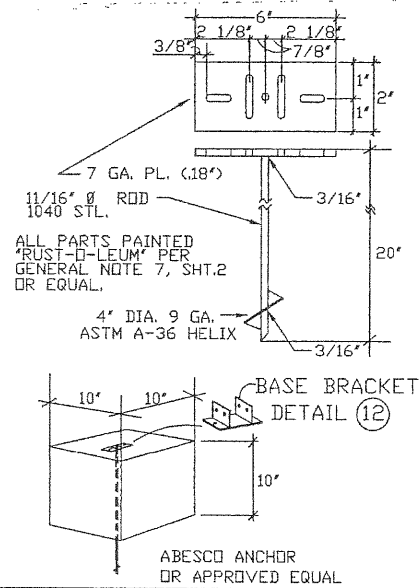
DATE 12-99 06-00 K.K. UPDATED
SCALE NONE
DWN BY K.K.

FOX ENGINEERING INC.
JAMES M. FOX, STRUCTURAL ENGINEER
JAMES G. FOX, CIVIL ENGINEER (562)
8060 TELEGRAPH RD. DOWNEY, CA. 90240 806-1337 FAX: 927-2509

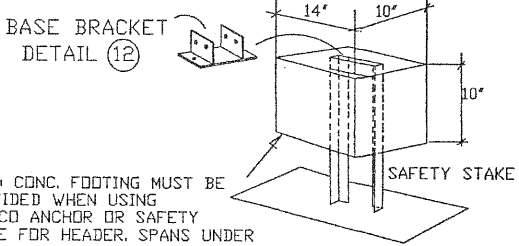
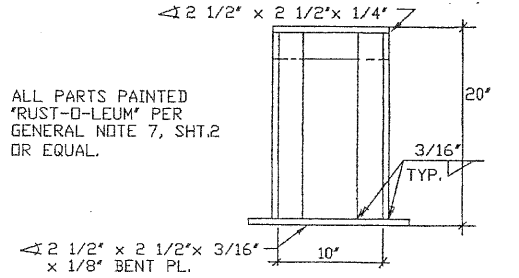
10 P.S.F.

WEATHERWOOD LATTICE PATIO COVER
AS MFG. BY:
DURALUM PRODUCTS, INC.
8269 ALPINE AVENUE
SACRAMENTO, CA 95826 (916) 452-7021

JOB NO. 99-2000-0
1 OF 2
SHEET



ABESCO ANCHOR W/ FOOTING (15)



NOTE: CONC. FOOTING MUST BE PROVIDED WHEN USING ABESCO ANCHOR OR SAFETY STAKE FOR HEADER, SPANS UNDER 'FOOTING COLUMN', TABLE C, SHT. 2 WHERE FOOTINGS EXCEED SLAB.

SAFETY STAKE W/ FOOTING (16)

GENERAL NOTE:

- ALUMINUM DESIGN PER 'ALUMINUM MANUAL' BY THE ALUMINUM ASSOCIATION AND PER TITLE 25 OF THE CALIFORNIA ADMINISTRATIVE CODE AND 1997 UNIFORM BUILDING CODE.
- CONCRETE MIX TO BE VOLUME - 1 1/2-1 2/3-1 1/2 (CEMENT, SAND AND GRAVEL) WATER-CEMENT RATIO SHALL NOT EXCEED 7-1/2 GALLONS PER SACK OF CEMENT. COMPRESSIVE STRENGTH IN 28 DAYS TO BE 2,500 P.S.I. MINIMUM.
- SOIL MAY BE ANY NATURAL SOIL OR MEDIUM TO COMPACT FILL EXCEPT LOOSE OR ORGANIC TYPES. SOIL BEARING VALUE 1,000 P.S.I.
- FASTENERS TO BE GALVANIZED OR CADMIUM PLATED OR STAINLESS STEEL OR 2024-T4 ALUMINUM:
 - A. SCREWS THROUGH METAL SIDE PLATE TO BE HEX HEAD POWER DRIVEN SCREWS WITH WASHERS FORMED INTEGRALLY WITH HEAD.
 - B. SELF-DRILLING ANCHORS TO BE 'SABER-TOOTH' HAND FLUSH TYPE AS MANUFACTURED BY RAWL PLUG CO., OR EQUAL, WITH PULL-OUT VALUES AS NOTED IN TABLES 6 AND 9.
- MISCELLANEOUS STEEL SHALL CONFORM TO A.S.T.M. A-36.
- STEEL POST SHALL BE MECHANICAL TUBING, ELECTRIC WELDED WITH ULTIMATE STRESS OF 60 K.S.I. MINIMUM AND YIELD POINT OF 40 K.S.I. MINIMUM, A-446.
- PAINT: 'RUST-O-LEUM' OR EQUAL RUST INHIBITIVE PRIMER AND FINISH COAT.
- ALL ALUMINUM ALLOYS TO BE AS SPECIFIED, OR AN APPROVED EQUAL.
- ALUMINUM IN CONTACT WITH STEEL SHALL BE PAINTED WITH 'JONES-DABNET' ZINC RICH 392-151 PAINT OR AN APPROVED EQUAL.
- EACH PATIO COVER SHALL HAVE PERMANENTLY AFFIXED AN IDENTIFICATION TAG WITH THE NAME AND ADDRESS OF THE MANUFACTURER, ROOF LIVE LOAD, HORIZONTAL WIND LOAD, WIND UPLIFT, APPROVAL AGENCY AND APPROVAL NUMBER.

MOBILEHOME ACCESSORY BUILDING OR STRUCTURE
HEALTH AND SAFETY CODE, DIVISION 13, PART 2
APPROVED
SUBJECT TO CORRECTIONS NOTED
Approval does not authorize or approve any omission or deviation from requirements of applicable State laws and regulations.
State of California
Department of Housing and Community Development
DIVISION OF CODES AND STANDARDS
By: Shudwell Date: 5/22/02
(signature) 88-72
SPA NO. _____
This Plan Approval Expires 6/30/04

